

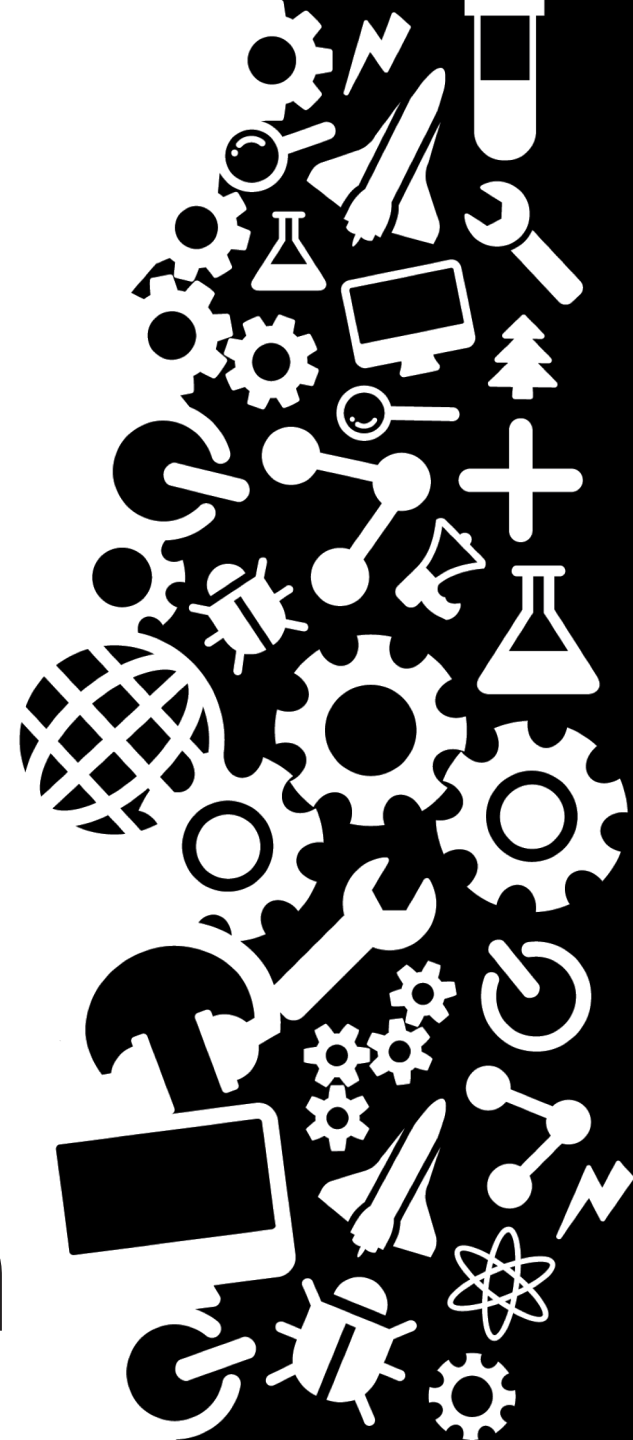
STEM Person of the Week

Guidance and resources for classroom teachers



Northumbria
University
NEWCASTLE

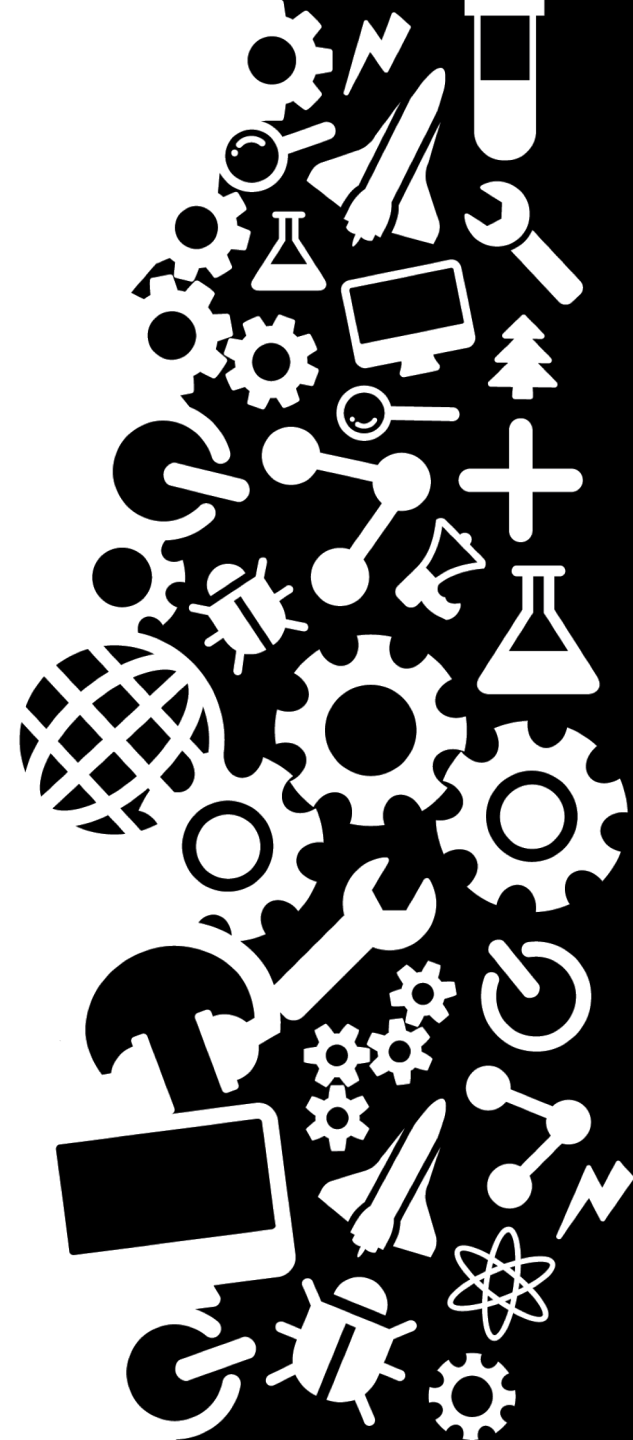
nustem



Overview

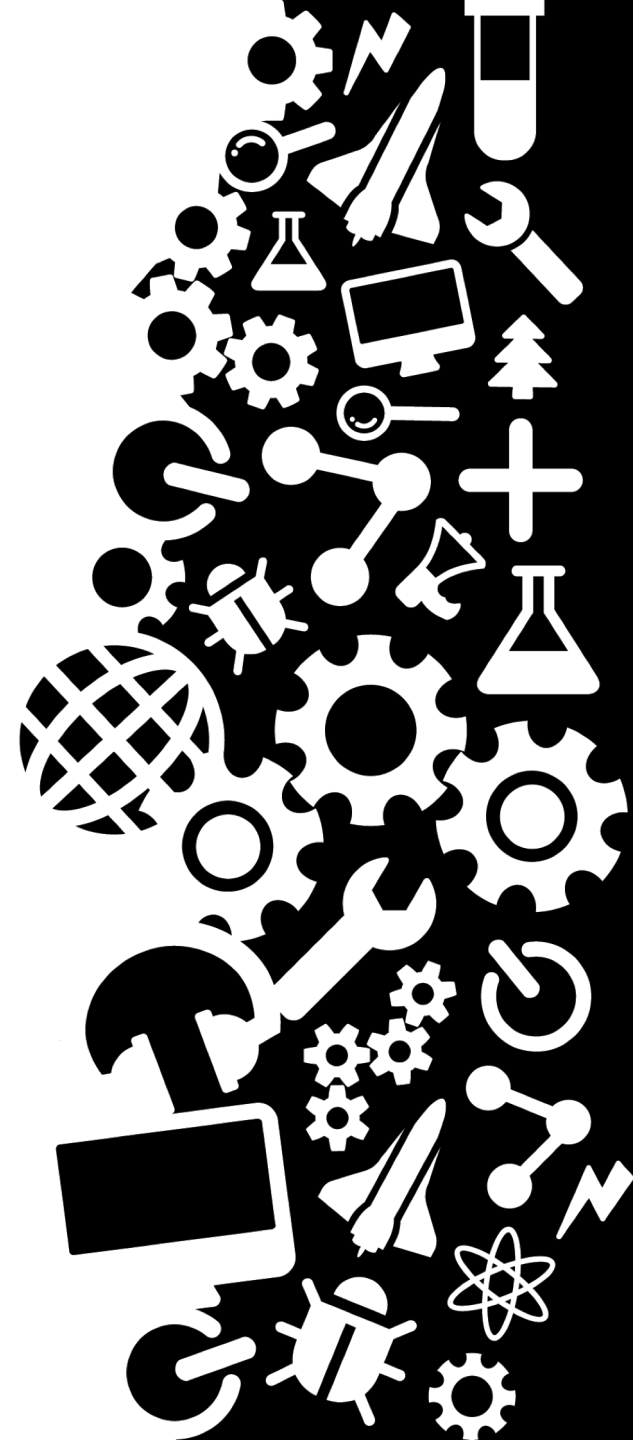
STEM Person of the Week is a 5-week, teacher-led intervention designed to reduce the common stereotypes surrounding science and scientists.

Each week every class will receive a poster postcards for the children introducing a new STEM worker.

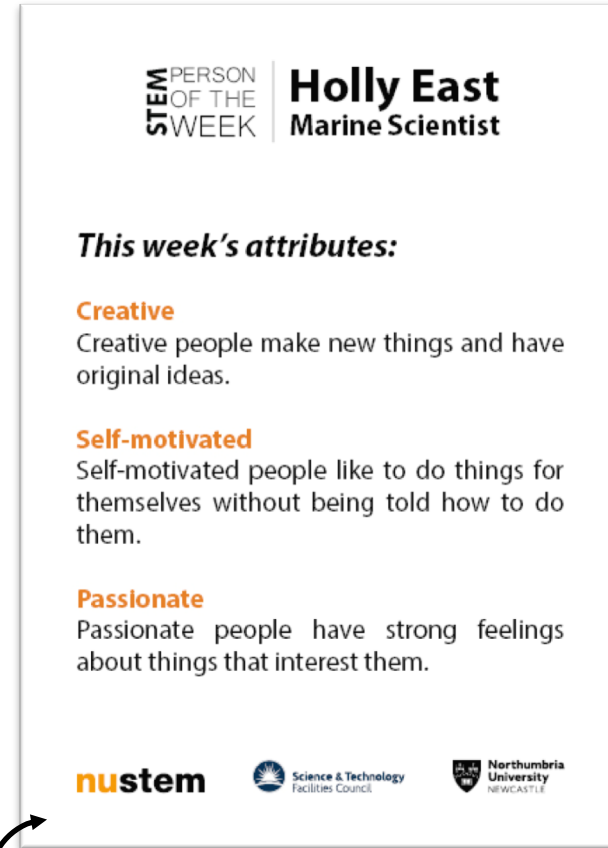
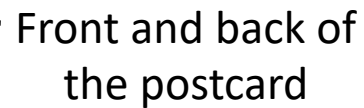


The resources

- An A3 poster to display on the classroom.
- A postcard for each of the children in your class.
- A PowerPoint presentation slide to introduce the STEM person to your class at the start of the week.



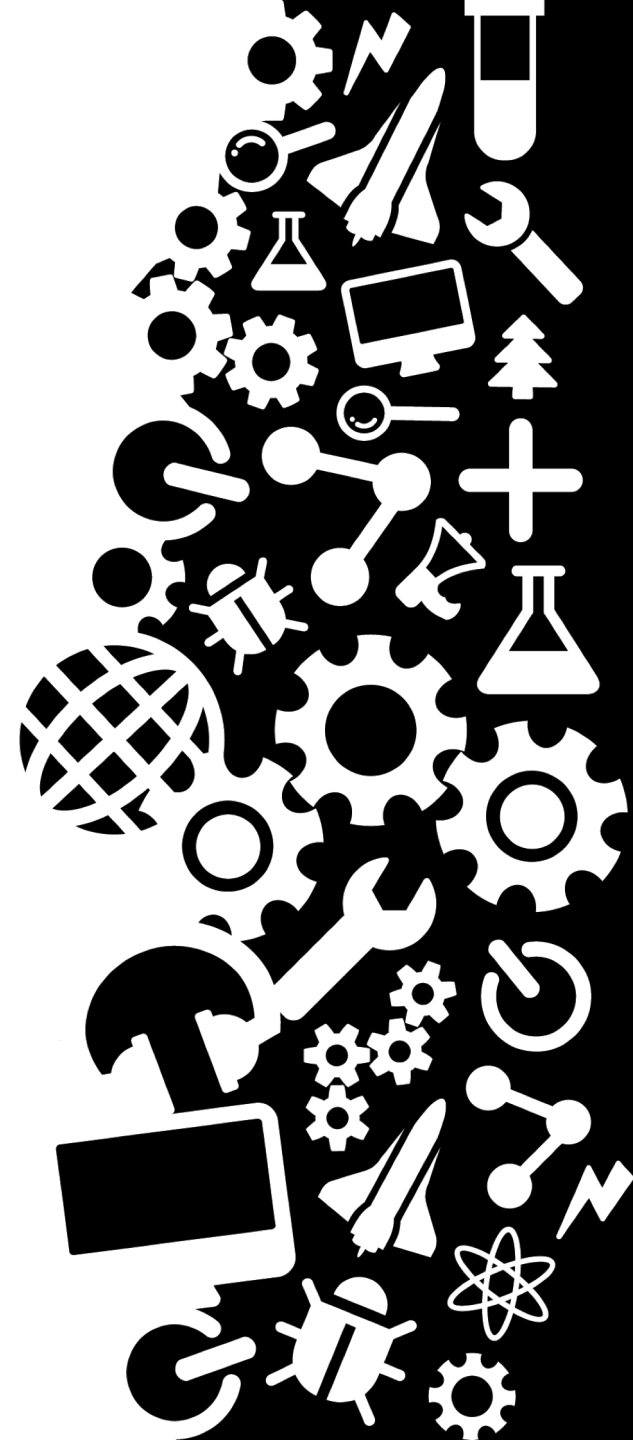
The poster





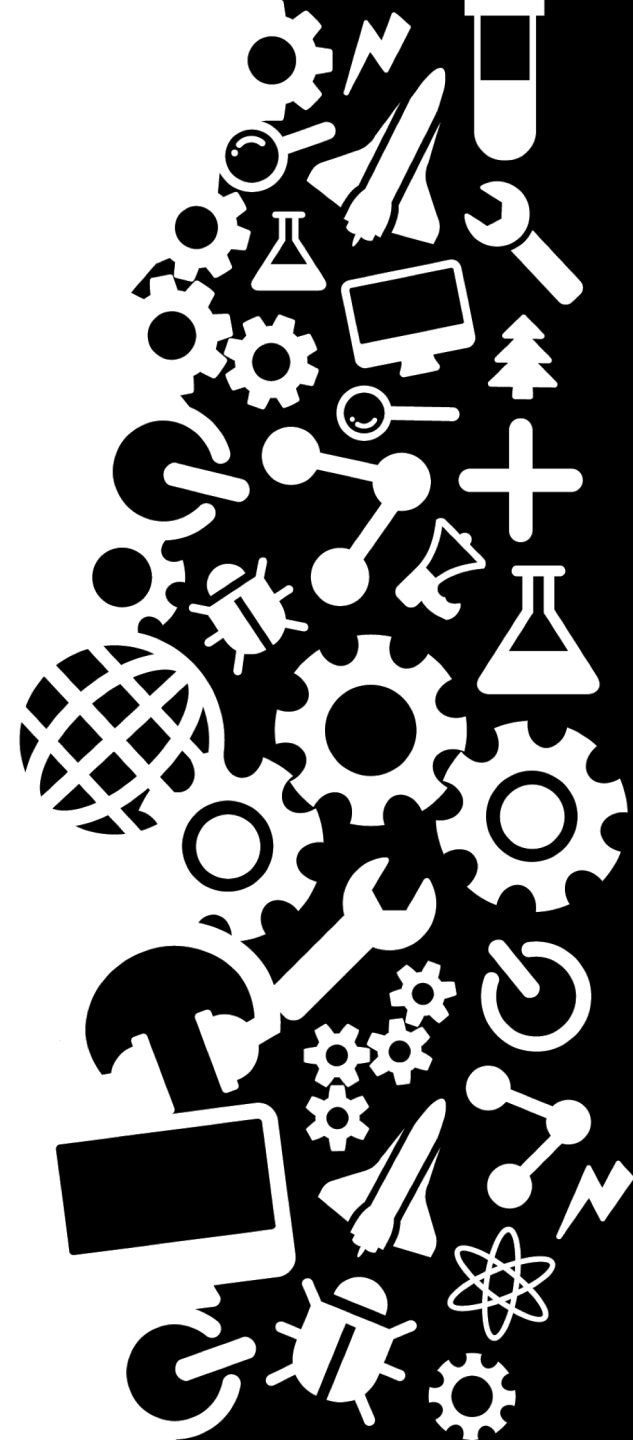
Northumbria University
NEWCASTLE

We want to show children that **they already have the skills that you need to be a scientist.**



The 15 Attributes

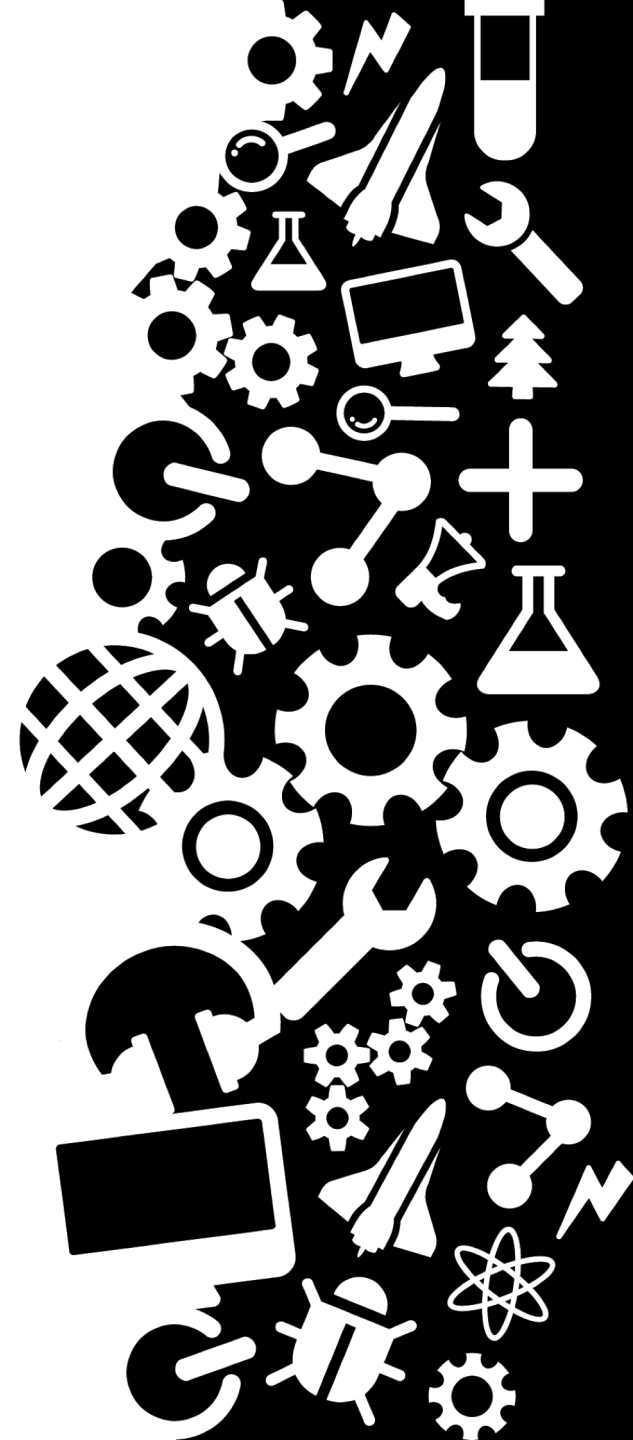
Observant	Open-minded	Committed
Creative	Imaginative	Patient
Resilient	Communcator	Passionate
Curious	Self-motivated	Hard-working
Tenacious	Collaborative	Organised



Breaking down stereotypes

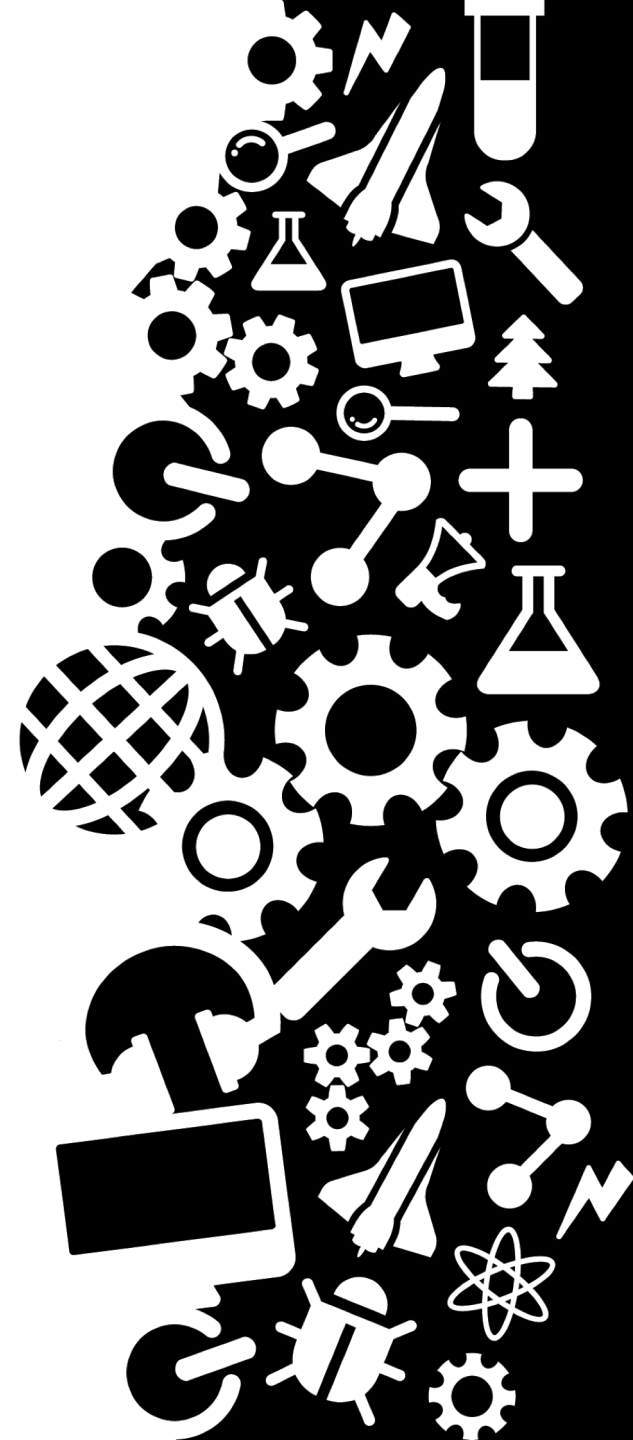
The STEM Person of the Week role models and counter-stereotypical attributes provide a new understanding of the skills needed to be a scientist.

After the intervention, children use less stereotypes when describing scientists and more positive attributes.



STEM Person of the Week Timeline

- W/b Monday 11 February – schools receive printed and electronic resources.
- Monday 25 February – intervention starts
- Friday 29 March – intervention ends



Questions and more information

Email: joe.Shimwell@unn.ac.uk

Visit: nustem.uk/spotw/

