



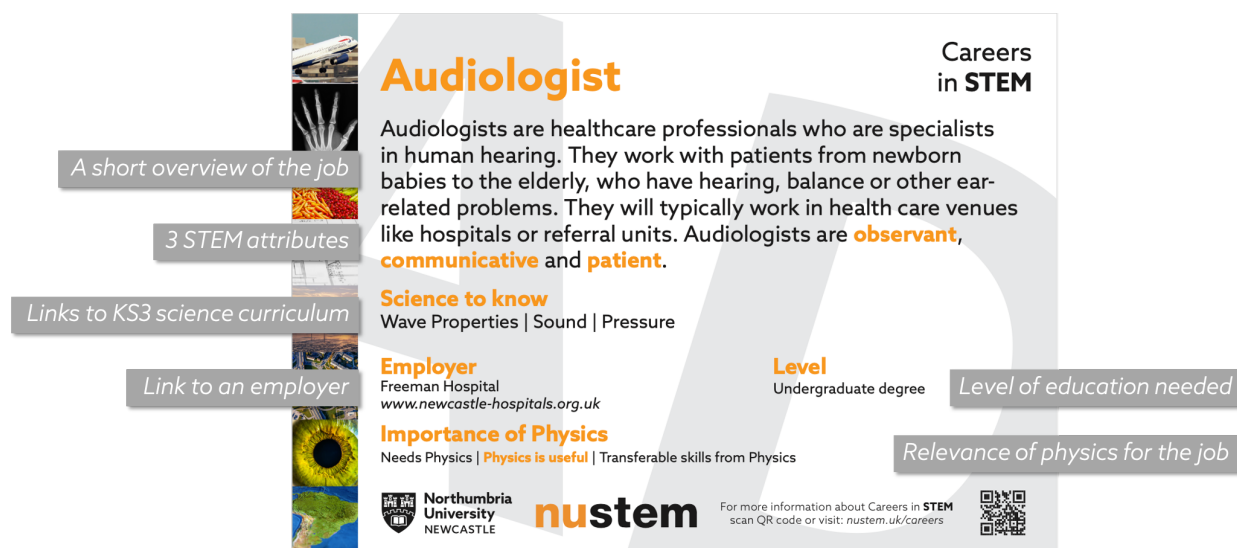
KS3 Careers in STEM Postcards

Supporting Information for Teachers

With the implementation of the new Gatsby Careers Benchmarks¹, teachers are expected to embed careers information in the classroom (Benchmark 4). Our KS3 Careers in STEM Postcards are an easy gateway to introduce your students to careers and local employers. The cards are available in both physical and digital formats, making them easy to incorporate into your own lessons, display in the classroom, or give out to students.

Anatomy of the postcard

Each postcard contains:



Why physics?

Physics is often seen as a 'difficult' subject to relate to jobs. These postcards not only enable teachers to showcase the importance of physics during their science lessons, but also to engage students earlier in conversations regarding their future subject options in school.

Why STEM attributes?

Students typically have limited knowledge of careers in STEM, and may find it difficult to picture themselves doing STEM jobs. Showcasing attributes helps a wide range of students identify with a job and the characteristics needed for it. Often students will already possess these attributes and characteristics.

¹ <https://www.gatsby.org.uk/education/focus-areas/good-career-guidance>

The 15 STEM attributes

We selected these based on earlier work by the WISE Campaign and the Royal Academy of Engineering:

Observant

If you are observant you are quick to see things, you are able to spot fine details, and you are good at paying attention.

Open-minded

Open-minded people are willing to listen to new ideas and respect other people's views and opinions.

Logical

Logical people can solve problems by thinking through them in a sensible order. They understand how one action can lead to another.

Creative

Creative people make new things and have original ideas.

Imaginative

If you are imaginative, you can think of new and interesting ideas.

Organised

Organised people are good at planning to make sure they finish things.

Patient

If you are patient, you are able to stay calm when faced with problems.

Resilient

Resilient people can quickly recover from difficult or challenging situations.

Communicator

Communicators are good at sharing information and ideas with other people.

Passionate

Passionate people have strong feelings about things that interest them.

Curious

If you are curious, you want to learn new things.

Self-motivated

Self-motivated people like to do things for themselves without being told how to do them.

Hard-working

Hard-working people put all of their effort into finishing things.

Tenacious

If you are tenacious, you are able to stick with something difficult until it is finished.

Collaborative

Collaborative people work together to do things.

Curriculum-mapped careers

We've mapped how the Careers in STEM postcards relate to the KS3 curriculum:

Forces

Speed
Pilot

Forces
Animator
Architectural Technologist
Civil Engineer
Environmental Planner
Geophysicist
Offshore Engineer
Pilot

Contact Forces
Civil Engineer
Offshore Engineer

Pressure
Audiologist
Pilot
Water Testing Analyst

Electromagnets

Voltage and Resistance
Electrician

Current
Electrician
Magnetism
Radiographer

Matter

Particle Matter
Nuclear Engineer
Elements
Biophysicist
Civil Engineer
Radiographer
Water Testing Analyst

Energy

Energy Costs
Lighting Technician
Energy Transfer
Architectural Technologist
Electrician
Lighting Technician
Telecommunications Engineer

Reactions

Types of Reaction
Food Technologist
Water Testing Analyst

Waves

Sound
Audiologist
Light
Animator
Architectural Technologist
Lighting Technician
Telecommunications Engineer
Wave Properties
Animator
Audiologist
Food Technologist
Nuclear Engineer
Radiographer
Telecommunications Engineer

Earth

Earth Structure
Environmental Planner
Geophysicist
Offshore Engineer

Earth Resources
Environmental Planner
Geophysicist

Organisms

Movement
Biophysicist
Cells
Biophysicist
Digestion
Food Technologist

Contact us!

We'd love to hear about how you're using the postcards, your suggestions for improvements, or if you have any questions. Get in touch:

antonio.portas@northumbria.ac.uk

You'll find this and other STEM career resources at:
nustem.uk/careers