



Lighting technician loans box

This box supports the activities in the Play Be C lighting technician unit. Scan the QR code to see the related activities.



Dark den – create a dark environment in your setting to investigate light, torches and shadows.



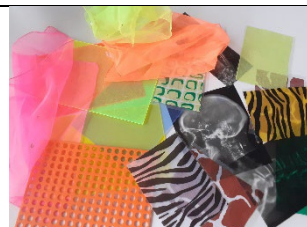
12 dark den poles and 8 dark den corners in a bag. Slide the poles through the sleeves on the outside of the canvas and join at the corners to create a cube.



Set of 6 rechargeable torches.



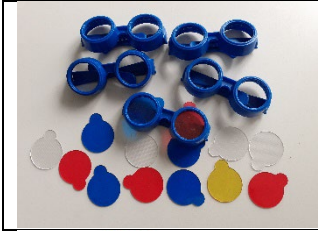
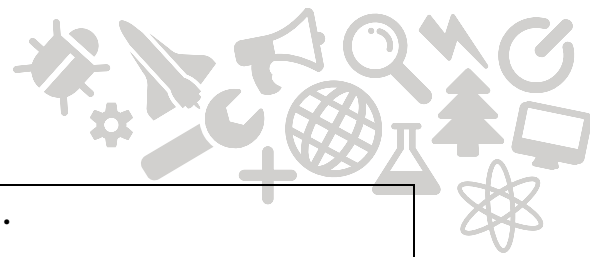
Light panel. Mains operated, changes colour and brightness. Ideal for illuminating activities and for experimenting with colour changing.



Variety of transparent materials and patterns to investigate and trace using the light panel.



Colour changing fans to use with torches or the light box.



Colour changing glasses.

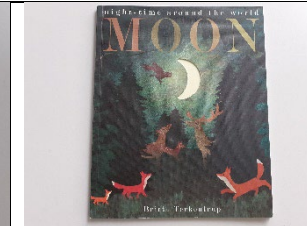
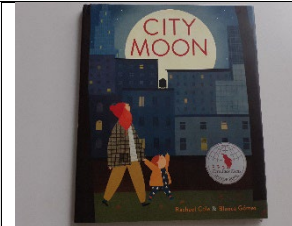
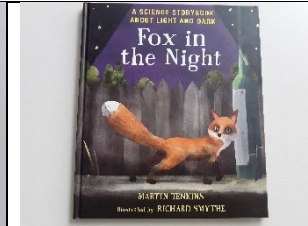
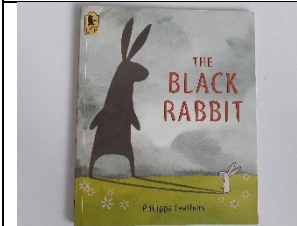


Light box accessories- wands, shapes, buttons and letters to use with torches or on the light box.



Wooden shadow puppets based on “The Black Rabbit” story.

Story books



Scan the QR code for more information about the contents of the box and supporting activities.